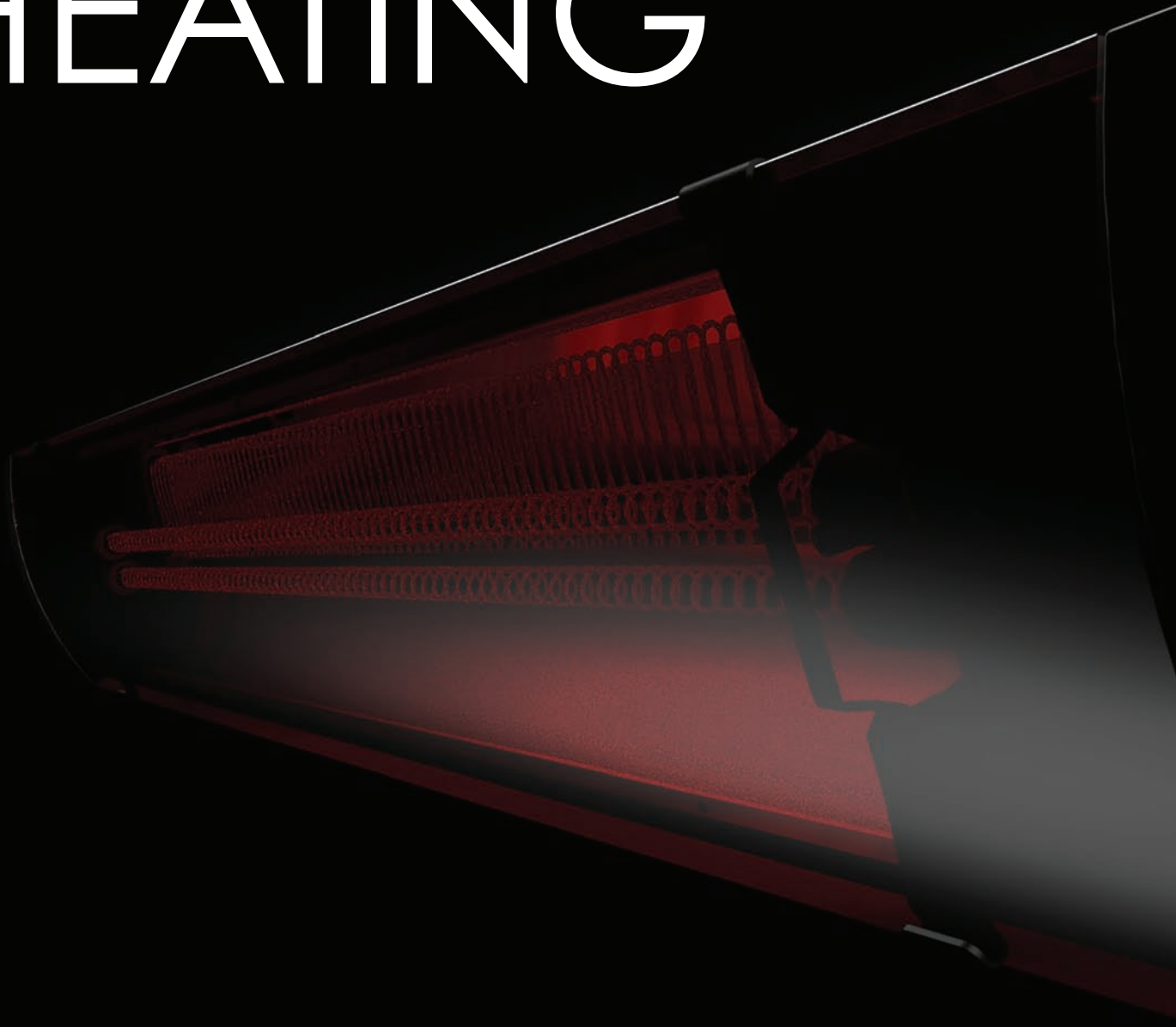


PURE RADIANT HEATING



HEATSCOPE®

award-winning pure

Electric infrared radiant heating is practical, functional, convenient and efficient. If you're looking for a discrete heating appliance that can be used both indoors and outdoors, in large open spaces or undercover areas, and is space saving as well as environmentally friendly - then the Heatscope® Pure electric infrared radiant heater is the ideal solution for you. Its flexibility makes it ideal for homes, restaurants, cafes, on terraces or in marquees - wherever you need an effective, unobtrusive heater.

Features

All Weather Installation

Pure's Ingress Protection (IP) rating of IP65 (exceeding the standard IPX5 rating of other brands) enables installation in indoor, semi enclosed and fully exposed outdoor environments. Pure can withstand general all-weather conditions of wind (dust) and rain. That means it doesn't need a protective shield or any additional protection from the elements.

Cleaner, Greener Heat

Pure converts over 90% of input energy directly into radiant heat and operates at a smarter cost per hour. No greenhouse gases or unpleasant odours are emitted, and they don't require ventilation or a flue.



Easy Installation

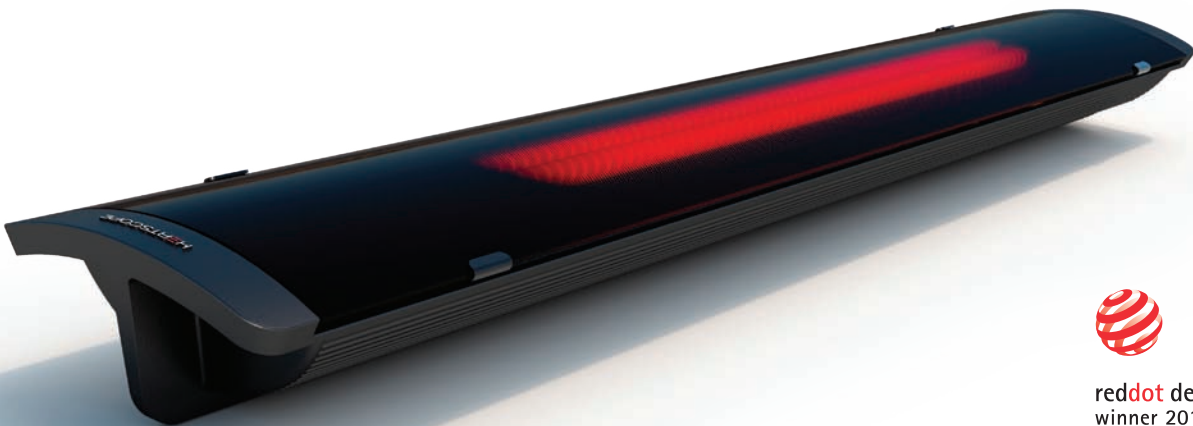
Dedicated wall & ceiling mounts (which only need two screws to be securely attached), enable subtle placement anywhere.

Directional Heating

Easily and accurately change the angle via the swivel joint mount for precise heating. The clean wavelength of light is only absorbed by solid objects, transferring heat directly to a person, table or floor rather than heating the air. Heat won't simply "blow away" in windy or drafty conditions.

Instant Heat

At the flick of a switch, Pure reaches maximum output in just 20-30 seconds producing immediate, comfortable heat when and where you need it.



reddot design award
winner 2018

Designed by Bjorn Blisse and the recipient of a highly regarded Red Dot Award, the elegant, slimline Heatscope® Pure delivers a stunning design aesthetic coupled with German precision engineering.



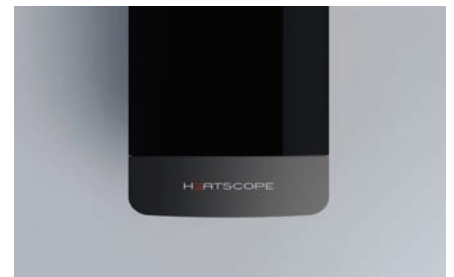
Ease of Use

Single ON/OFF switch, plus two adjustable output levels – 100% and 50%. Can also be integrated with Smart Home Systems – perfect for the connected home.



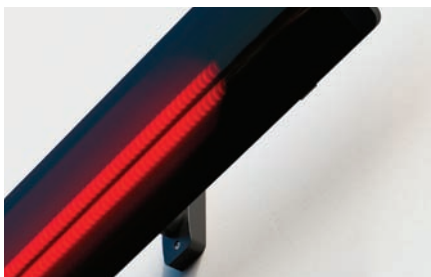
Curved Glass Ceramic Screen

The only electric infrared radiant heater worldwide fitted with a convex SCHOTT NEXTREMA® glass front. Spreads warmth evenly across an area while minimising light emission. Beautifully resolved with black or white coloured glass.



Design Aesthetics

Constructed from premium materials and made with meticulous attention to detail - Pure strikes the perfect balance between innovative styling and technical performance. Available in either black or white Pure is an elegant yet powerful heating solution for all environments.



Maximum Heat with Minimum Light

Carbon fibre elements charged with an electric current generate heat but minimal light, creating a softer, super comfortable heat without the harsh light. Pure provides a subtle, low glow, which doesn't change the lighting effect of a room or the colour of objects (including food!).



Simple Maintenance, Ultra Durable

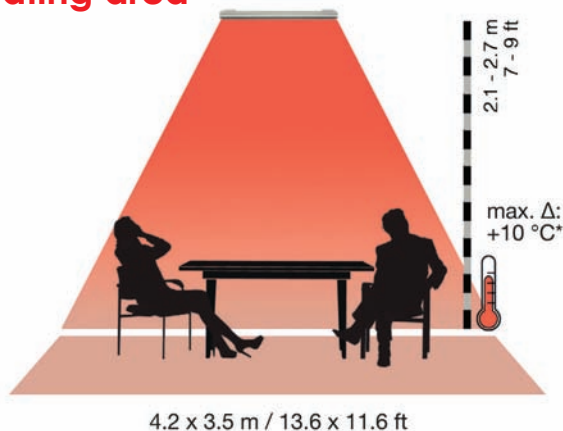
No valves, ignition components or burners to maintain or repair. Aluminium chassis means it won't discolour or tarnish over time and provides superior design, shape and heat transfer.

Contact us today to learn more about Heatscope® and partnering with us.

pure specifications

	Heatscope® Pure 2400W	
SKU	HTS.1.PUR.24.WH	HTS.1.PUR.24.BL
MPN	MHS-PE2400WT.400	MHS-PE2400AB.400
Colours	White	Black
Dimensions (L x W x H)	1044 x 166 x 87 mm / 41.1 x 6.5 x 3.4 in	
Weight (approx)	7.5kg / 16.5lbs	
Electrical Connection	220 - 240V AC~, 50/60 Hz, 10.43A	
Heat Output	2400W / 8,190 BTU/h	
IP Standard	IP65	
Full Heat	20-30 sec.	
Visible Light	< 300-400 Lumen	
Included Accessory	Bracket for wall or ceiling mounting	
Optional Accessory	Wi-Fi Wall Mount Switch	

heating area



*Values are approximate. Max. temperature increases achievable in enclosed spaces at 16°C (dependent on the respective installation conditions and mounting height).

we're here to help

Our experienced team are happy to review your drawings and offer a complimentary tailored recommendation on how to achieve the best outcome for your installation and design objectives.

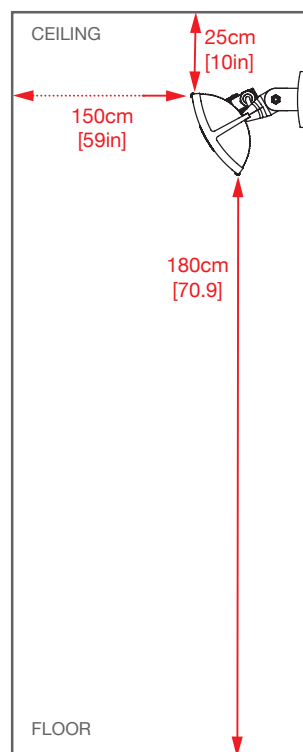
MAD Design Australia Pty Ltd

Showrooms 3 & 4, 40-42 O'Riordan St, Alexandria NSW 2015
T 02 9997 3050 E info@mad-australia.com
heatscopeheaters.com

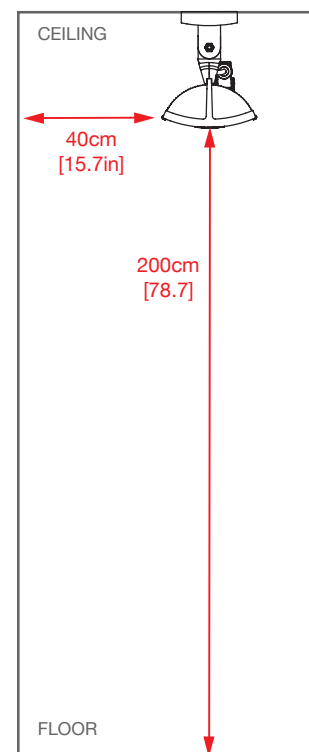
Must only be installed by a licensed technician. Heatscope® is not liable for damages sustained through the use of materials not fire rated. Refer to material specifications for heat tolerances. Installation must be performed in accordance to local standards and jurisdictional requirements. Heatscope® takes no responsibility for incorrect or non-compliant installations. MHS Munich@ Home Systems GmbH 2018ff. All product specifications and data are subject to change without notice and believed to be correct at the time of printing. V0720

minimum installation clearances

Wall Mounting



Ceiling Mounting (Face Down)



HEATSCOPE®